



HOSHIZAKI

BEERMATIC DBF-AS65WE-EU-HC

Beer Dispenser



ITEM NUMBER: B078-C101
COUNTRY OF ORIGIN: JAPAN
BRAND: HOSHIZAKI

Hoshizaki BEERMATIC DualTap DBF-AS65WE-EU-HC is an automatic Draft Beer Dispenser with Foaming Mechanism. After initial freeze down 65 lt of beer can be served consecutively in 4 hours.

Hands-free portion control allows set quantity of chilled draft beer and beer head to be served by the push of a button. Beer is dispensed first, followed by beer head, which is poured from a separate spout. Thus, portion control can be very accurate, without spillage of beer and/or beer head.

- Internal cooling system. Draft beer can be served from ambient temperature kegs
- Two different types of beer can be served at one time
- Hands-free portion control
- Manual pouring can be quickly implemented
- Dispensing rate 4 jugs per minute. A portion counter monitors the number of portions served
- Designed for high-volume outlets. After initial freeze down 65 lt of beer can be served consecutively in 4 hours
- Recovery time: 45 minutes. Quantity available after recovery time: 10.2 lt
- Manually raising or lowering the glass support base to the desired distance from each spout
- Folding or unfolding the spring-loaded base, beer can be served from each single tap into two pre-set sizes
- Compatible with jugs of 50 mm or more in inside diameter and 105 mm or less in outside diameter.

ACCESSORIES INCLUDED

Cleaning sponges, Drain pan x 2, Grille x 2, Platform x 2

OPTIONAL EXTRAS

N/A

WARRANTY PERIOD

2 Years on Parts & Labour - based on country agreement

EXTERIOR

ABS front and side panels, bottom plate of galvanized steel

Refrigerant type: R600a / Refrigerant: 0.08 kg / CO2 equivalent: 0.24 kg

OPERATING CONDITIONS

Ambient temperature (minimum): 5 °C, Ambient temperature (maximum): 32 °C, Voltage range (Rated Voltage): ± 6%

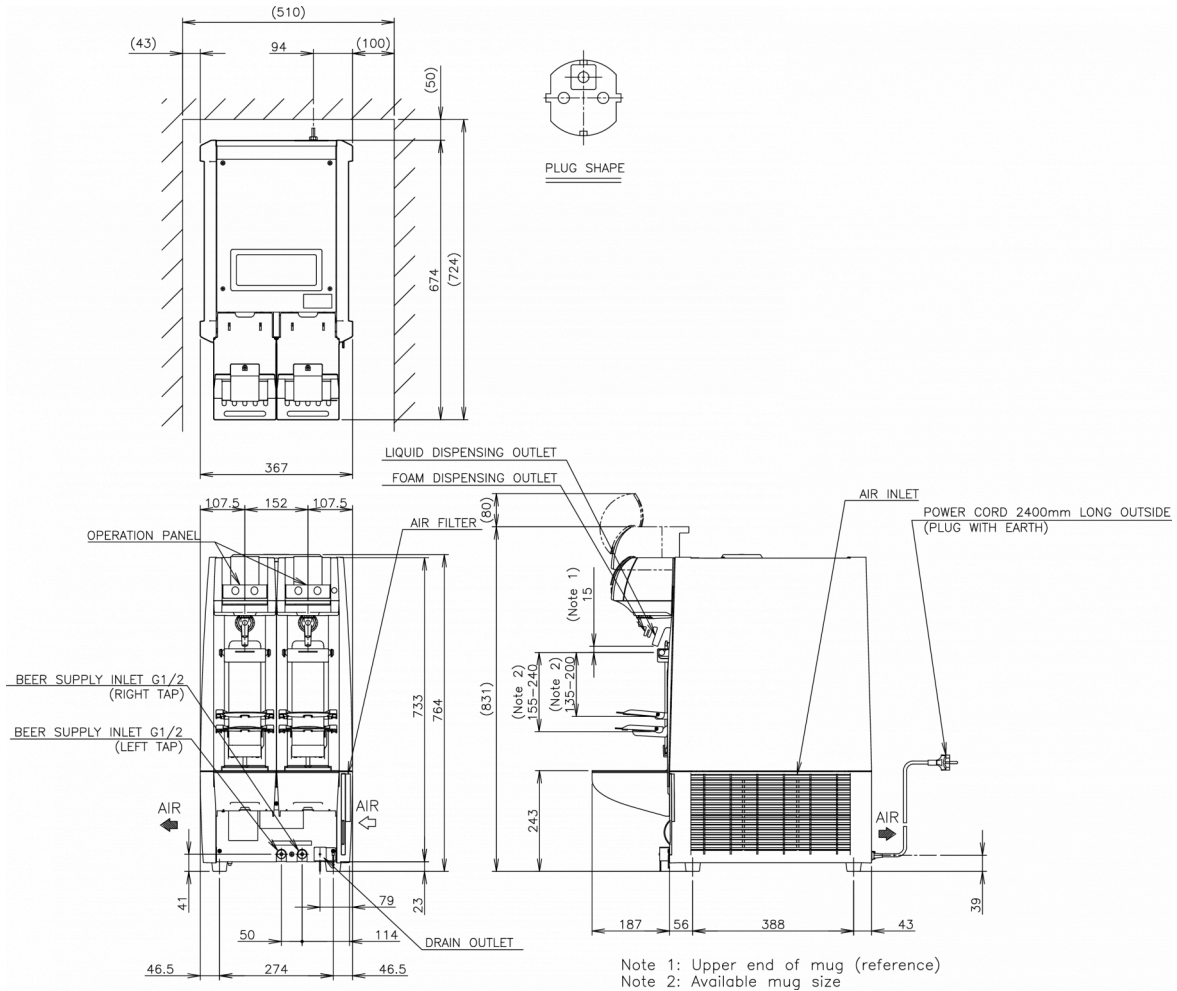
CERTIFICATIONS





HOSHIZAKI

BEERMATIC DBF-AS65WE-EU- HC



TECHNICAL SPECIFICATIONS

Cooling system	Power supply	Electrical circuit breaker protection	Heat Rejection (AT 32°C, WT 21°C)	Flow Rate	Instant Output after 45 minutes recovery time	Instant output in 4 hours after initial freeze down period of 10 hours	Recovery time
Air Cooled	1/220 - 240V/50Hz	10 A	0.375 kW	34-49 ml/s (2.0 - 3.5 bar)	10.2 l	65 l	45 m

SHIPPING SPECIFICATIONS

Width (packed)	Depth (packed)	Height (packed)	Volume (packed)	Gross weight	Width	Depth	Height	Net weight
466 mm	795 mm	858 mm	0.318 m ³	57 kg	367 mm	674 mm	764 mm	50 kg

Disclaimer: Every effort has been made to ensure that the information contained in this spec sheet is accurate at the time of publishing. Hoshizaki Europe BV assumes no responsibility or liability for typographical errors or omissions or for any misinterpretation of the information within the publication and reserves the right to change without notice.

Please observe: The draft beer dispenser is compatible with glasses of 50 mm or over in inside diameter and 105 mm or less in outside diameter. There must be a difference of 20 mm or over in height between a large size glass and a medium size glass. If you use glasses or tumblers of other sizes, please consult our installation manual. Available as special order unit.



Hoshizaki Belgium
Hoshizaki Danmark
Hoshizaki Deutschland
Hoshizaki France
Hoshizaki Iberia
Hoshizaki Italia
Hoshizaki Middle East

info@hoshizaki.nl
info@hoshizaki.dk
vertrieb@hoshizaki.de
info@hoshizaki.fr
info@hoshizaki.es
commerciale@hoshizaki.it
sales.ex@hoshizaki-europe.com

Hoshizaki Netherlands info@hoshizaki.nl
Hoshizaki Norge salg@hoshizaki.no
Hoshizaki Sverige orderSE@hoshizaki.dk
Hoshizaki UK uksales@hoshizaki.uk
Export countries sales.ex@hoshizaki-europe.com
Other countries sales.ex@hoshizaki-europe.com

www.hoshizaki-europe.com